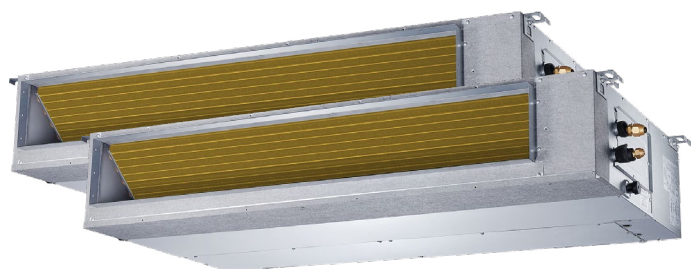
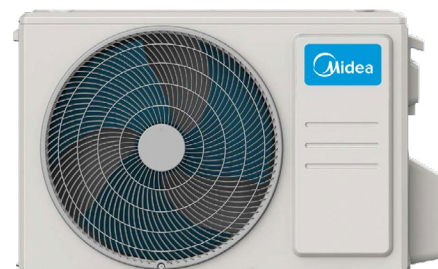


# Ducts

## Twins Axial Current Loop



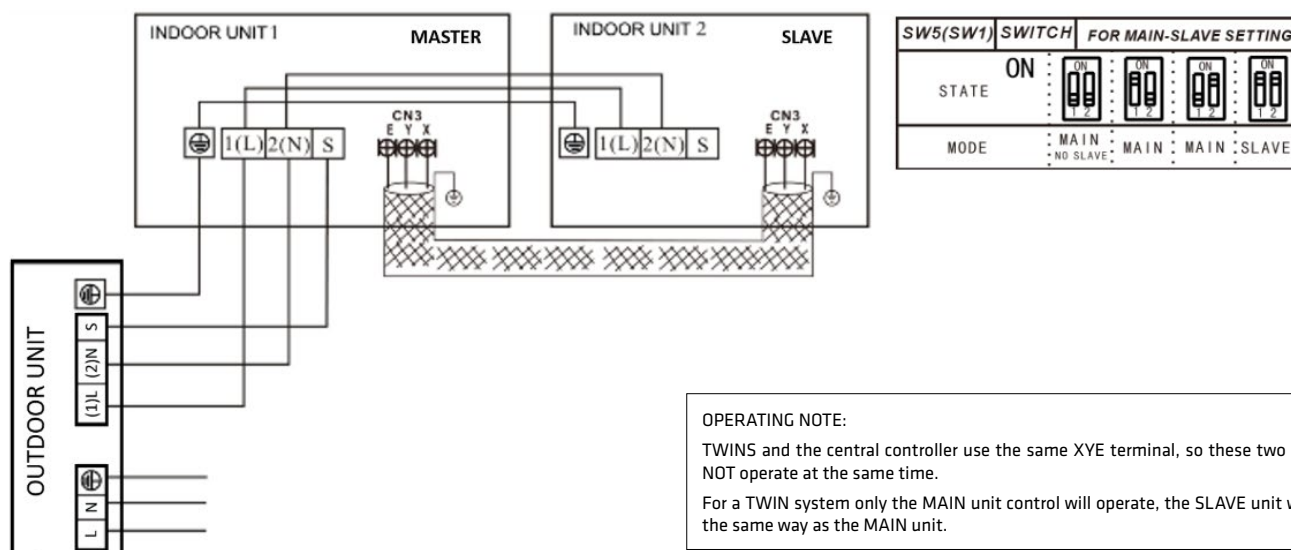
**KC-03.1 SPS**  
**Recommended**  
**controller**



## FEATURES

Indoor model / Outdoor model	2x KPD-35 DR13-X / KUE-71 DVR13
Cooling capacity (indoor)	2x 3,52 kW
Heating capacity (indoor)	2x 3,81 kW
Airflow (indoor)	350/500/660 m³/h
Sound pressure (indoor)	29,80/33,50/36 dB(A)
Max. available pressure	60 Pa
Airflow (outdoor)	3.500 m³/h
Sound pressure (outdoor)	60 dB(A)
Power supply	220-240 V / 1 / 50 Hz
Circuit breaker / Fuse	25 / 20 A
Power wiring (outdoor)	(2+T)x2,50 mm²
Interconnection wiring (outdoor - indoor)	(3+T)x1 mm²
Controller communication wiring	2x0,5 mm² (≤20 m) / 2x0,75-1,25 mm² (≤50 m)
XYE communication BUS (shielded)	3x0,75 mm²

## WIRING DIAGRAM



### OPERATING NOTE:

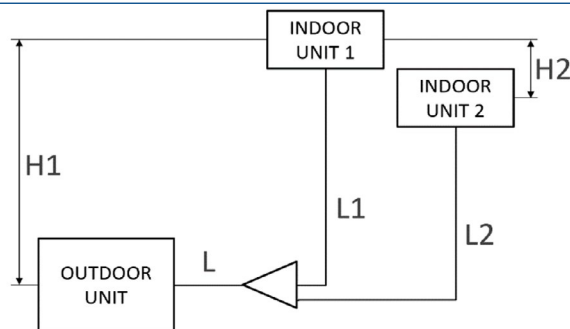
TWINS and the central controller use the same XYE terminal, so these two functions will NOT operate at the same time.

For a TWIN system only the MAIN unit control will operate, the SLAVE unit will operate in the same way as the MAIN unit.

NOTES:  
(1) The data and specifications present in this sheet may vary without notice.  
(2) The images on this sheet are indicative and may be different from the final machine.

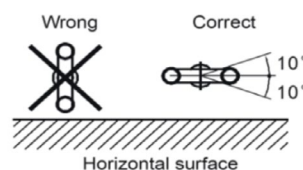
## COOLING CONNECTION

Model	2x KPD-35 DR13-X / KUE-71 DVR13	
Refrigerating pipes (L)	$\varnothing 3/8''$ / $\varnothing 5/8''$	
Refrigerating pipes (L1 & L2)	$\varnothing 1/4''$ / $\varnothing 3/8''$	
Refrigerant charge	1,50 kg	
Indoor drain pipe	$\varnothing 25$ mm	
Max. pipe length	50 m	
Max. level difference between outdoor & indoor unit (H1)	20 m	
Max. level difference between indoor units (H2)	0,50 m	
Max. pipe length (L1 & L2)	15 m	
Difference between pipes (L1-L2)	10 m	



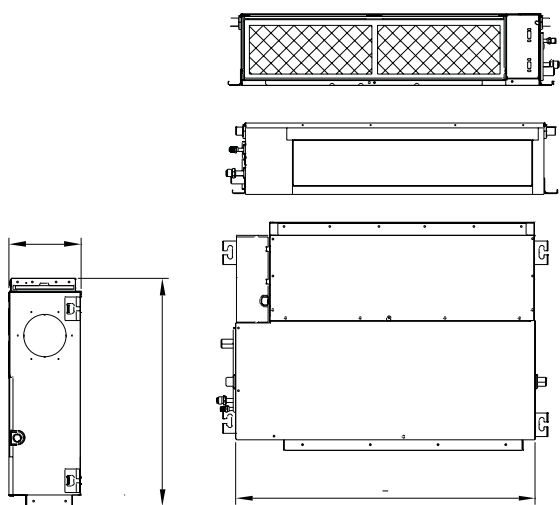
Distributor installation:

A direction view



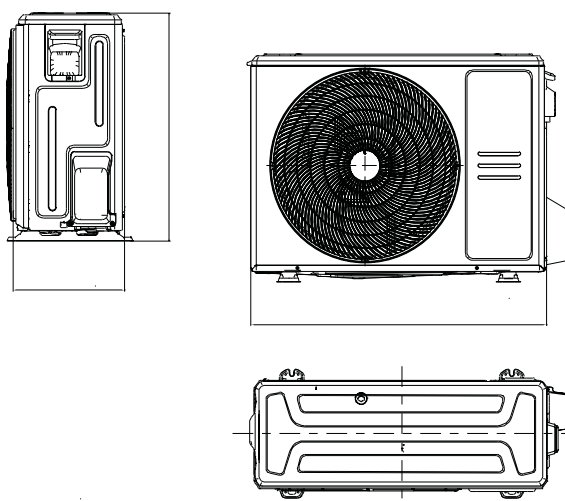
## DIMENSIONS & WEIGHT INDOOR

Model	KPD-35 DR13-X
Width	700 mm
Height	200 mm
Depth	506 mm
Weight	17,80 kg



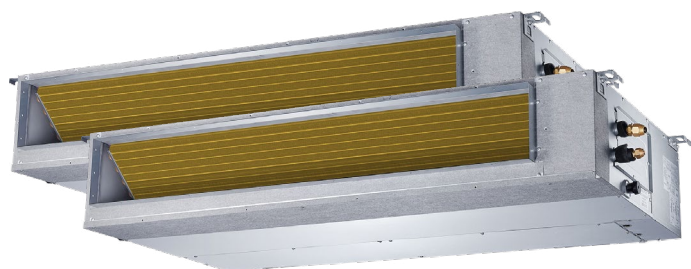
## DIMENSIONS & WEIGHT OUTDOOR

Model	KUE-71 DVR13
Width	890 mm
Height	673 mm
Depth	342 mm
Weight	43,90 kg

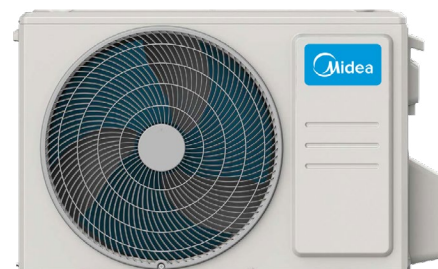


# Ducts

## Twins Axial Current Loop



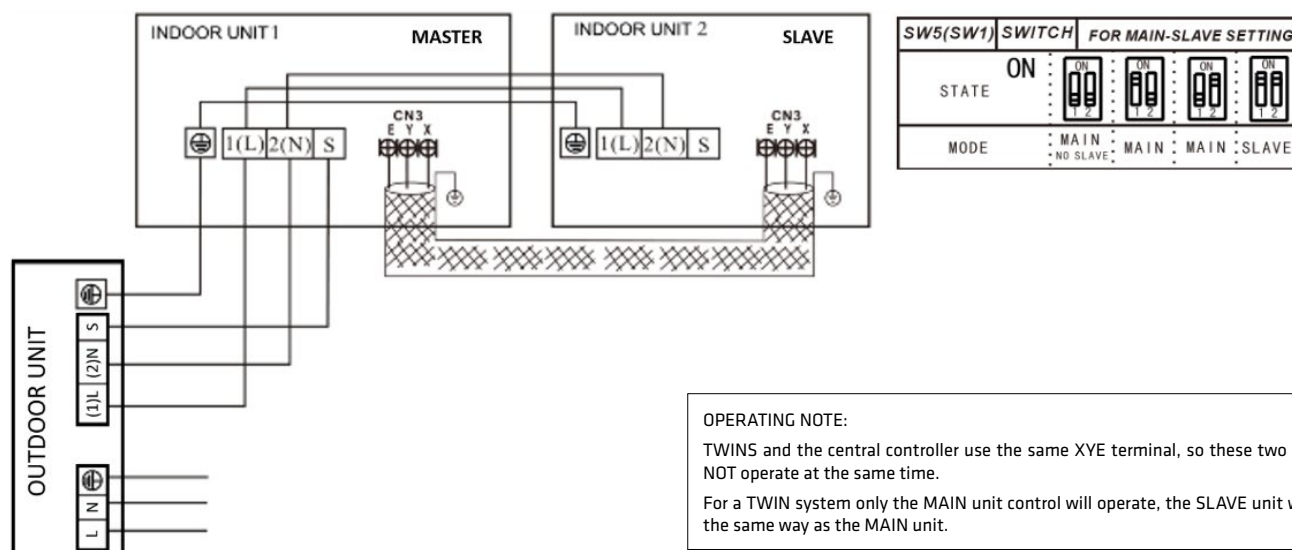
**KC-03.1 SPS**  
**Recommended**  
**controller**



## FEATURES

Indoor model / Outdoor model	2x KPD-52 DR13-X / KUE-105 DVR13
Cooling capacity (indoor)	2x 5,28 kW
Heating capacity (indoor)	2x 5,57 kW
Airflow (indoor)	420/670/870 m³/h
Sound pressure (indoor)	26/29,80/35 dB(A)
Max. available pressure	100 Pa
Airflow (outdoor)	4.000 m³/h
Sound pressure (outdoor)	63 dB(A)
Power supply	220-240 V / 1 / 50 Hz
Circuit breaker / Fuse	50 / 40 A
Power wiring (outdoor)	(2+T)x4 mm²
Interconnection wiring (outdoor - indoor)	(3+T)x1 mm²
Controller communication wiring	2x0,5 mm² (≤20 m) / 2x0,75-1,25 mm² (≤50 m)
XYE communication BUS (shielded)	3x0,75 mm²

## WIRING DIAGRAM



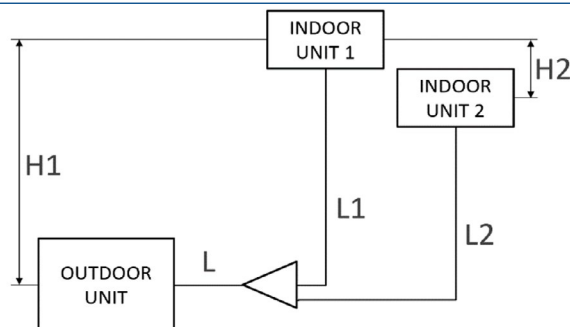
### OPERATING NOTE:

TWINS and the central controller use the same XYE terminal, so these two functions will NOT operate at the same time.

For a TWIN system only the MAIN unit control will operate, the SLAVE unit will operate in the same way as the MAIN unit.

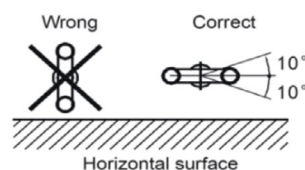
## COOLING CONNECTION

Model	2x KPD-52 DR13-X / KUE-105 DVR13	
Refrigerating pipes (L)	$\varnothing 3/8''$ / $\varnothing 5/8''$	
Refrigerating pipes (L1 & L2)	$\varnothing 1/4''$ / $\varnothing 1/2''$	
Refrigerant charge	2,40 kg	
Indoor drain pipe	$\varnothing 25$ mm	
Max. pipe length	65 m	
Max. level difference between outdoor & indoor unit (H1)	20 m	
Max. level difference between indoor units (H2)	0,50 m	
Max. pipe length (L1 & L2)	15 m	
Difference between pipes (L1-L2)	10 m	



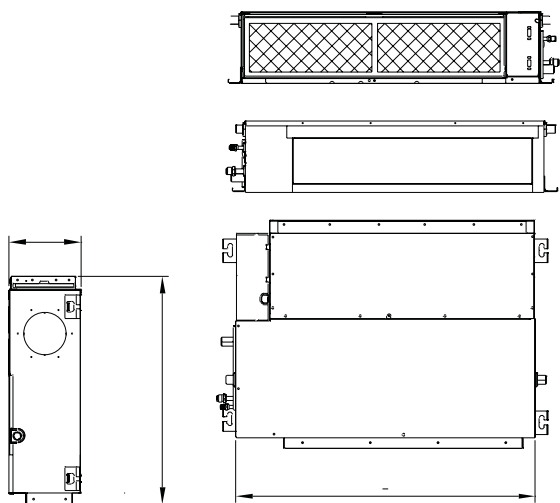
Distributor installation:

A direction view



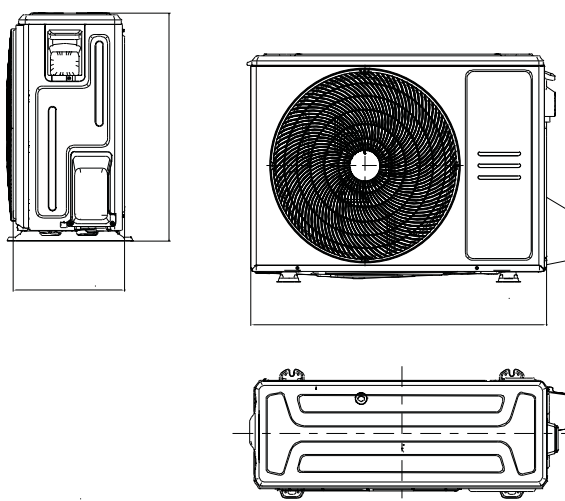
## DIMENSIONS & WEIGHT INDOOR

Model	KPD-52 DR13-X
Width	880 mm
Height	210 mm
Depth	674 mm
Weight	24,40 kg



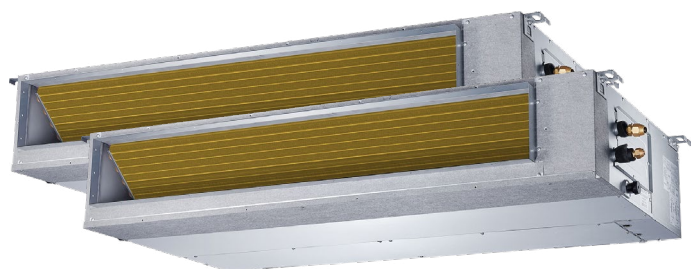
## DIMENSIONS & WEIGHT OUTDOOR

Model	KUE-105 DVR13
Width	810 mm
Height	946 mm
Depth	410 mm
Weight	66,90 kg

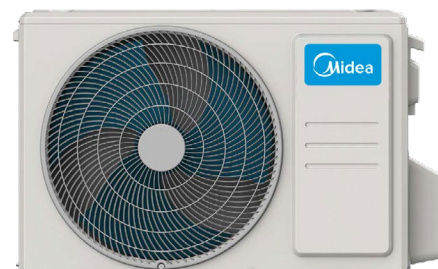


# Ducts

## Twins Axial Current Loop



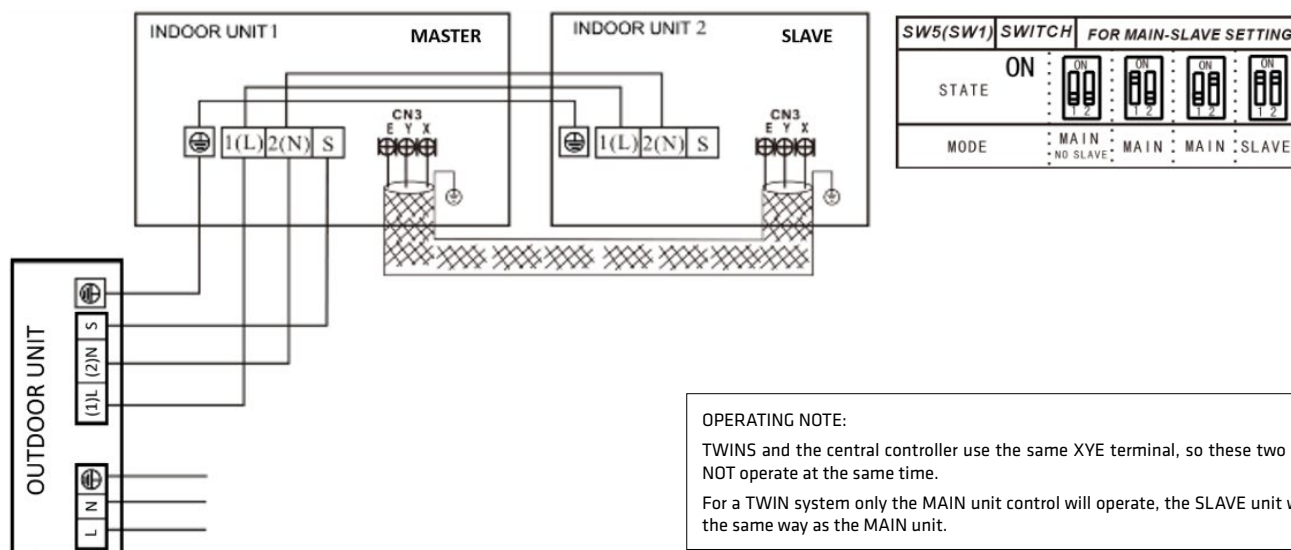
**KC-03.1 SPS**  
**Recommended**  
**controller**



## FEATURES

Indoor model / Outdoor model	2x KPD-52 DR13-X / KUE-105 DTR13
Cooling capacity (indoor)	2x 5,28 kW
Heating capacity (indoor)	2x 5,57 kW
Airflow (indoor)	420/670/870 m³/h
Sound pressure (indoor)	26/29,80/35 dB(A)
Max. available pressure	100 Pa
Airflow (outdoor)	4.000 m³/h
Sound pressure (outdoor)	63 dB(A)
Power supply	308-415 V / 3 / 50 Hz
Circuit breaker / Fuse	25 / 20 A
Power wiring (outdoor)	(4+T)x2,50 mm²
Interconnection wiring (outdoor - indoor)	(3+T)x1 mm²
Controller communication wiring	2x0,5 mm² (≤20 m) / 2x0,75-1,25 mm² (≤50 m)
XYE communication BUS (shielded)	3x0,75 mm²

## WIRING DIAGRAM



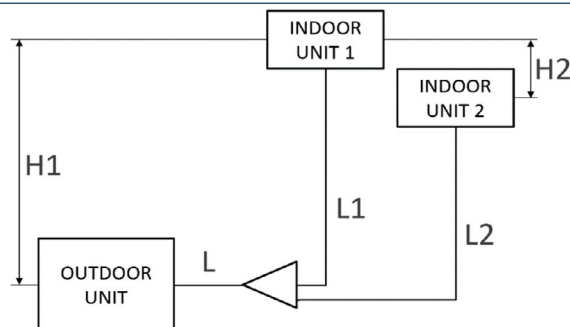
### OPERATING NOTE:

TWINS and the central controller use the same XYE terminal, so these two functions will NOT operate at the same time.

For a TWIN system only the MAIN unit control will operate, the SLAVE unit will operate in the same way as the MAIN unit.

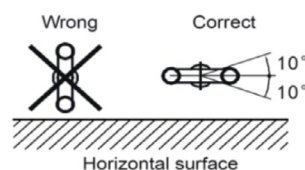
## COOLING CONNECTION

Model	2x KPD-52 DR13-X / KUE-105 DTR13	
Refrigerating pipes (L)	$\varnothing 3/8''$ / $\varnothing 5/8''$	
Refrigerating pipes (L1 & L2)	$\varnothing 1/4''$ / $\varnothing 1/2''$	
Refrigerant charge	2,40 kg	
Indoor drain pipe	$\varnothing 25$ mm	
Max. pipe length	65 m	
Max. level difference between outdoor & indoor unit (H1)	20 m	
Max. level difference between indoor units (H2)	0,50 m	
Max. pipe length (L1 & L2)	15 m	
Difference between pipes (L1-L2)	10 m	



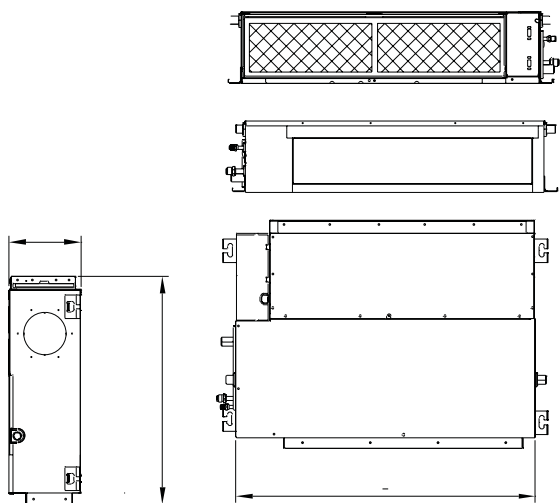
Distributor installation:

A direction view



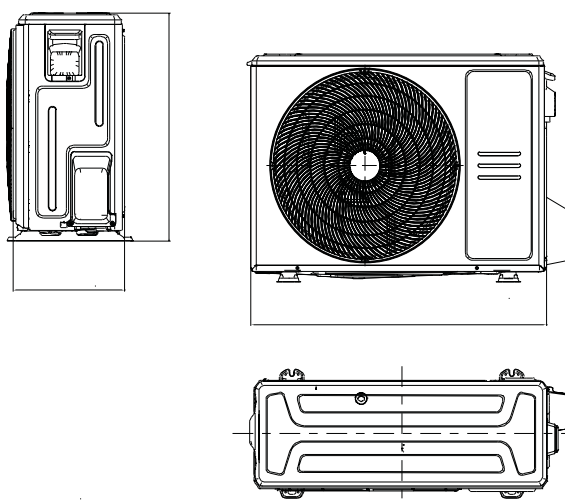
## DIMENSIONS & WEIGHT INDOOR

Model	KPD-52 DR13-X
Width	880 mm
Height	210 mm
Depth	674 mm
Weight	24,40 kg



## DIMENSIONS & WEIGHT OUTDOOR

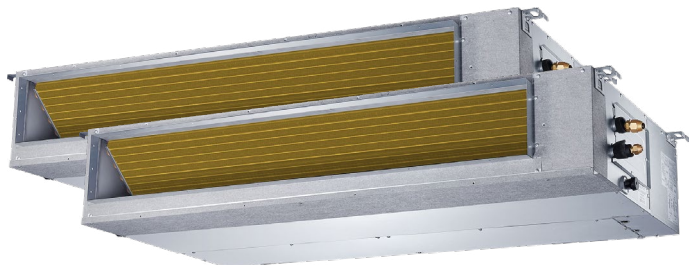
Model	KUE-105 DTR13
Width	810 mm
Height	946 mm
Depth	410 mm
Weight	80,50 kg





# Ducts

## Twins Axial Current Loop



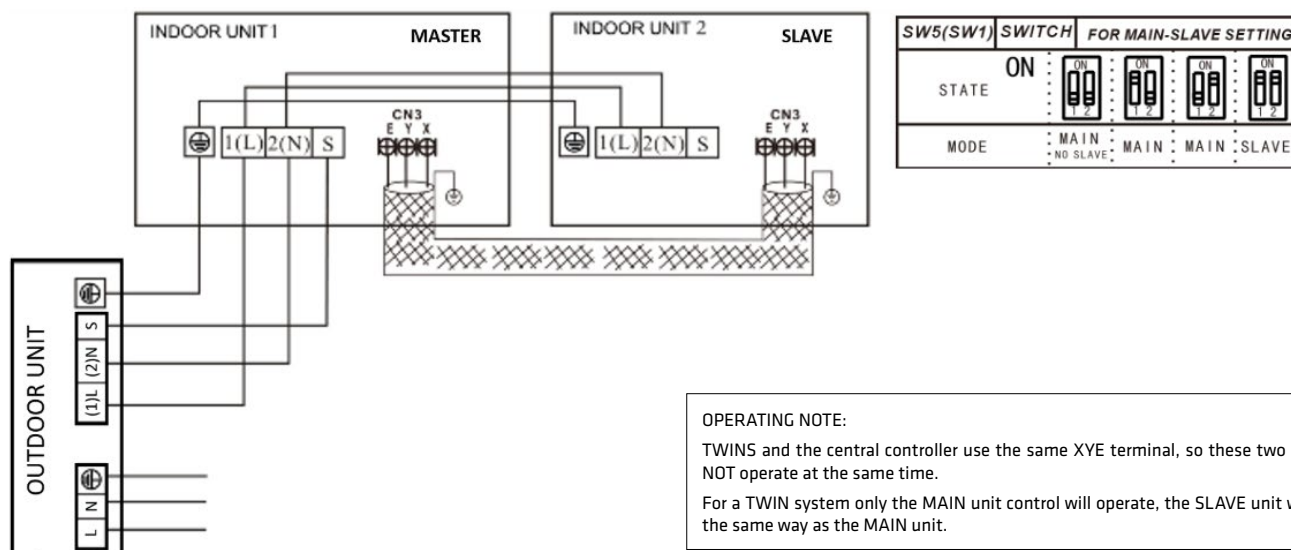
**KC-03.1 SPS**  
**Recommended**  
**controller**



## FEATURES

Indoor model / Outdoor model	2x KPD-71 DR13-X / KUE-140 DTR13
Cooling capacity (indoor)	2x 7,03 kW
Heating capacity (indoor)	2x 7,62 kW
Airflow (indoor)	610/930/1.200 m³/h
Sound pressure (indoor)	25,50/29,10/32,80 dB(A)
Max. available pressure	160 Pa
Airflow (outdoor)	7.500 m³/h
Sound pressure (outdoor)	63,50 dB(A)
Power supply	308-415 V / 3 / 50 Hz
Circuit breaker / Fuse	32 / 25 A
Power wiring (outdoor)	(4+T)x2,50 mm²
Interconnection wiring (outdoor - indoor)	(3+T)x1 mm²
Controller communication wiring	2x0,5 mm² (≤20 m) / 2x0,75-1,25 mm² (≤50 m)
XYE communication BUS (shielded)	3x0,75 mm²

## WIRING DIAGRAM



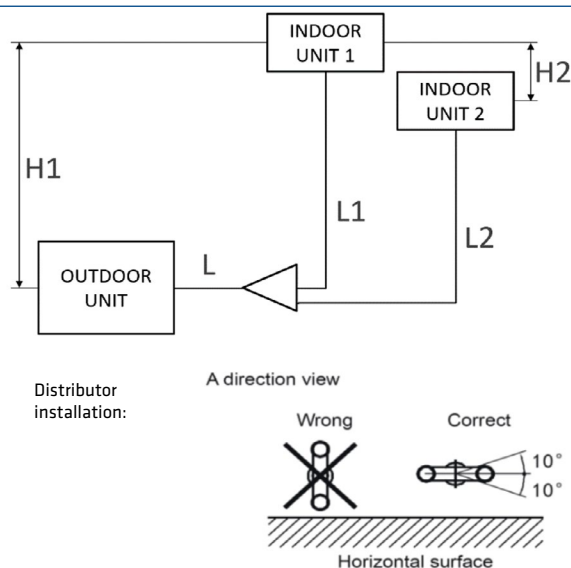
### OPERATING NOTE:

TWINS and the central controller use the same XYE terminal, so these two functions will NOT operate at the same time.

For a TWIN system only the MAIN unit control will operate, the SLAVE unit will operate in the same way as the MAIN unit.

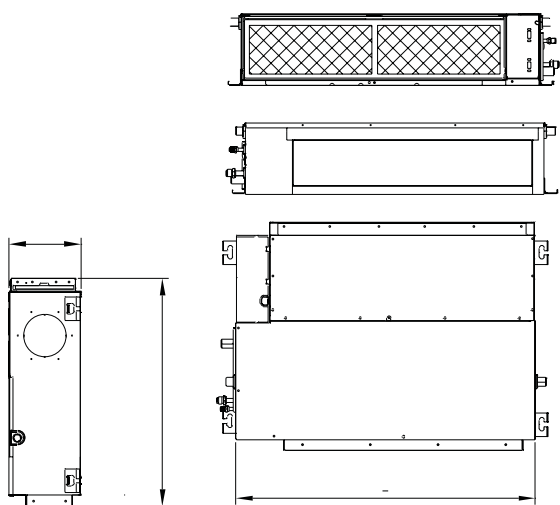
## COOLING CONNECTION

Model	2x KPD-71 DR13-X / KUE-140 DTR13	
Refrigerating pipes (L)	$\varnothing 3/8''$ / $\varnothing 5/8''$	
Refrigerating pipes (L1 & L2)	$\varnothing 3/8''$ / $\varnothing 5/8''$	
Refrigerant charge	2,90 kg	
Indoor drain pipe	$\varnothing 25$ mm	
Max. pipe length	65 m	
Max. level difference between outdoor & indoor unit (H1)	20 m	
Max. level difference between indoor units (H2)	0,50 m	
Max. pipe length (L1 & L2)	15 m	
Difference between pipes (L1-L2)	10 m	



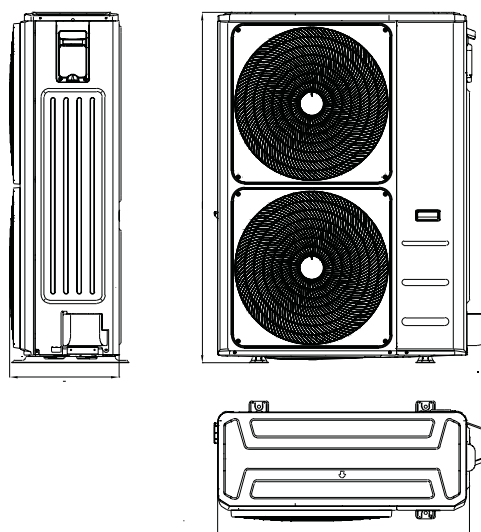
## DIMENSIONS & WEIGHT INDOOR

Model	KPD-71 DR13-X
Width	1.100 mm
Height	249 mm
Depth	774 mm
Weight	32,30 kg



## DIMENSIONS & WEIGHT OUTDOOR

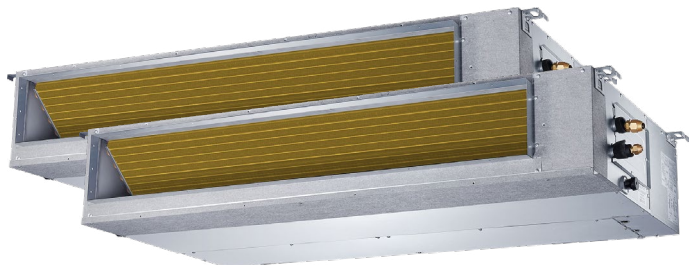
Model	KUE-140 DTR13
Width	952 mm
Height	1.333 mm
Depth	415 mm
Weight	103,70 kg





# Ducts

## Twins Axial Current Loop



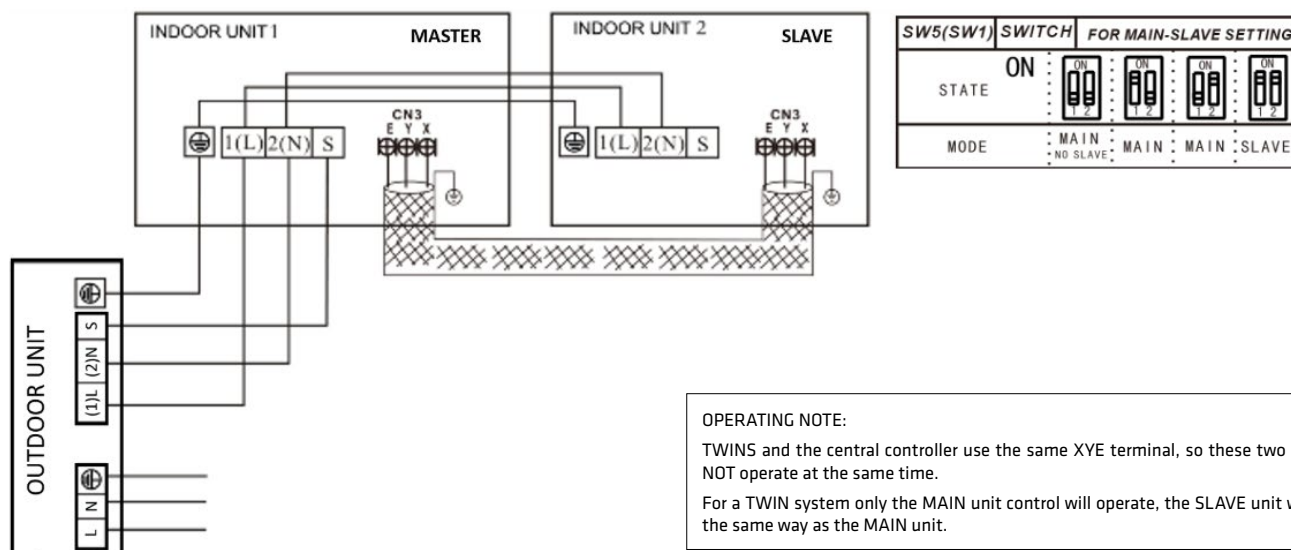
**KC-03.1 SPS**  
**Recommended**  
**controller**



## FEATURES

Indoor model / Outdoor model	2x KPD-90 DR13-X / KUE-160 DTR13
Cooling capacity (indoor)	2x 8,79 kW
Heating capacity (indoor)	2x 9,38 kW
Airflow (indoor)	2.120/2.350/2.600 m³/h
Sound pressure (indoor)	35,40/38,30/41,80 dB(A)
Max. available pressure	160 Pa
Airflow (outdoor)	7.500 m³/h
Sound pressure (outdoor)	64 dB(A)
Power supply	308-415 V / 3 / 50 Hz
Circuit breaker / Fuse	32 / 25 A
Power wiring (outdoor)	(4+T)x2,50 mm²
Interconnection wiring (outdoor - indoor)	(3+T)x1 mm²
Controller communication wiring	2x0,5 mm² (≤20 m) / 2x0,75-1,25 mm² (≤50 m)
XYE communication BUS (shielded)	3x0,75 mm²

## WIRING DIAGRAM



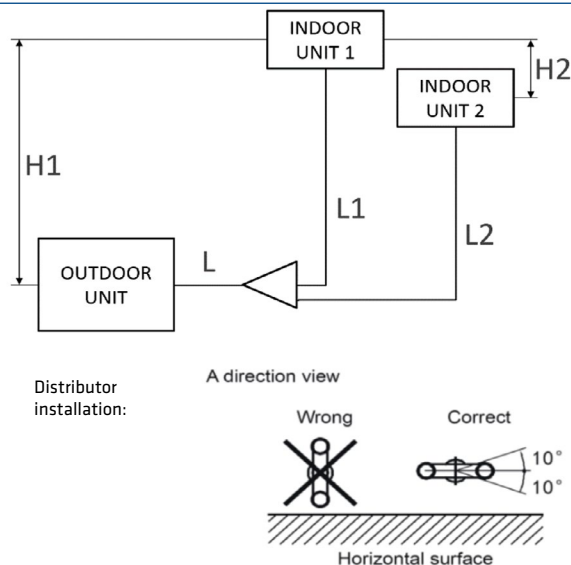
### OPERATING NOTE:

TWINS and the central controller use the same XYE terminal, so these two functions will NOT operate at the same time.

For a TWIN system only the MAIN unit control will operate, the SLAVE unit will operate in the same way as the MAIN unit.

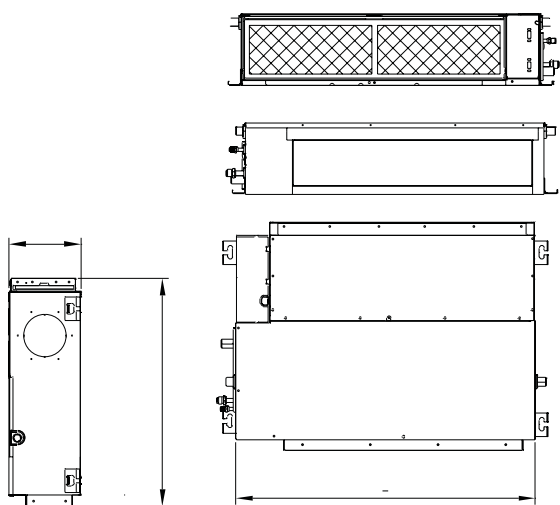
## COOLING CONNECTION

Model	2x KKPD-90 DR13-X / KUE-160 DTR13	
Refrigerating pipes (L)	Ø3/8" / Ø5/8"	
Refrigerating pipes (L1 & L2)	Ø3/8" / Ø5/8"	
Refrigerant charge	3 kg	
Indoor drain pipe	Ø25 mm	
Max. pipe length	65 m	
Max. level difference between outdoor & indoor unit (H1)	20 m	
Max. level difference between indoor units (H2)	0,50 m	
Max. pipe length (L1 & L2)	15 m	
Difference between pipes (L1-L2)	10 m	



## DIMENSIONS & WEIGHT INDOOR

Model	KPD-90 DR13-X
Width	1.360 mm
Height	249 mm
Depth	774 mm
Weight	40,50 kg



## DIMENSIONS & WEIGHT OUTDOOR

Model	KUE-160 DTR13
Width	952 mm
Height	1.333 mm
Depth	415 mm
Weight	107 kg

